



# Williams Creek Fisheries Sensitive Watershed



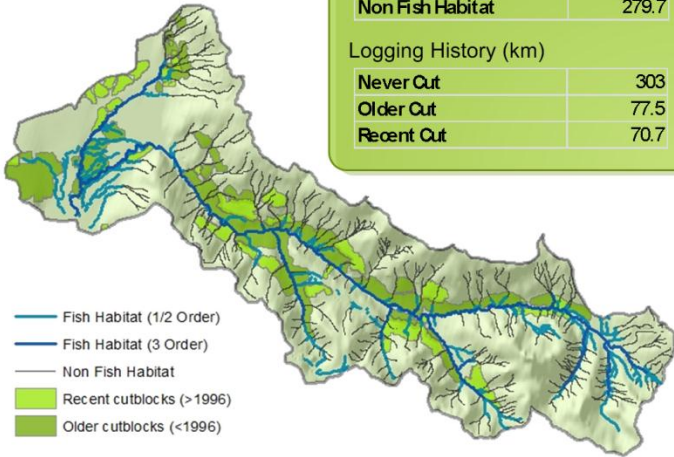
Ministry of Forests, Lands and Natural Resource Operations



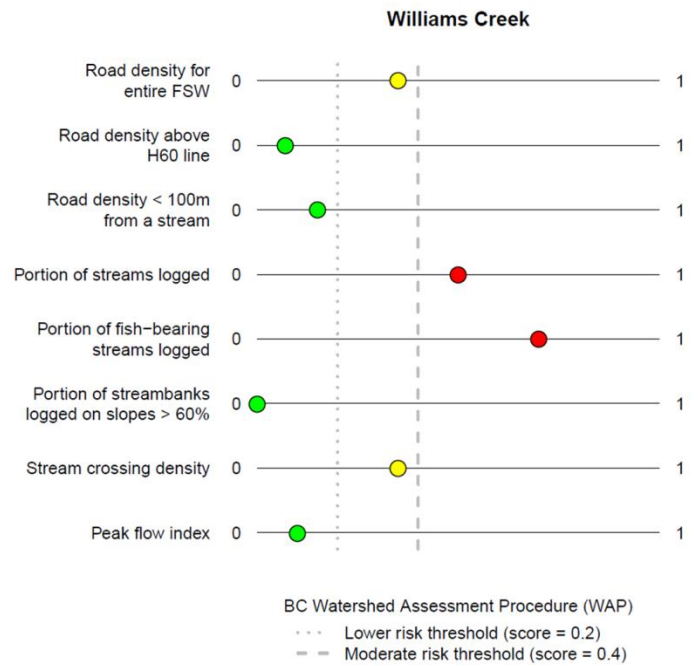
## STUDY AREA

Habitat Type (km)	
Fish Habitat (1/2 Order)	105.5
Fish Habitat (3 Order)	65.9
Non Fish Habitat	279.7

Logging History (km)	
Never Cut	303
Older Cut	77.5
Recent Cut	70.7

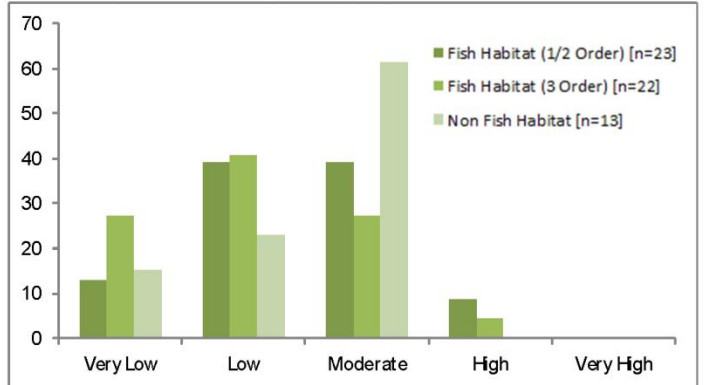


## REMOTELY SENSED GIS METRICS



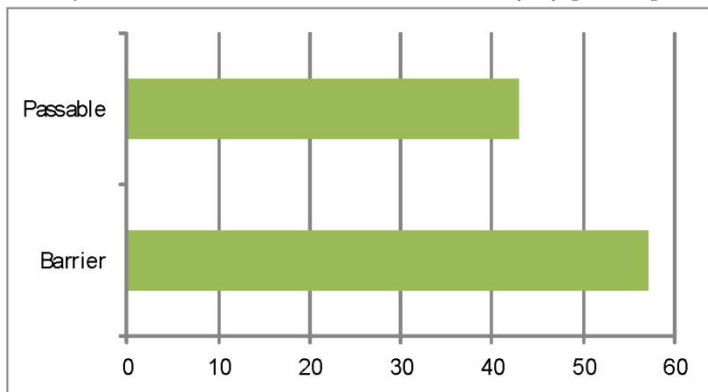
## WATER QUALITY

Sites by Risk Category (%)

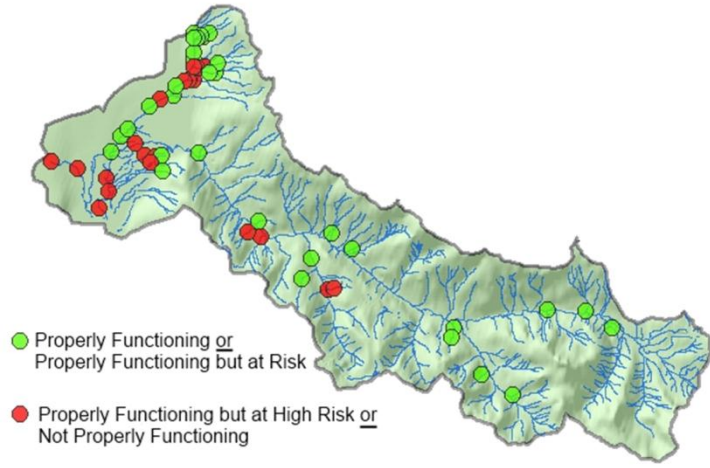


## FISH PASSAGE

Sample Sites – Barrier or Passable (%) [n=14]

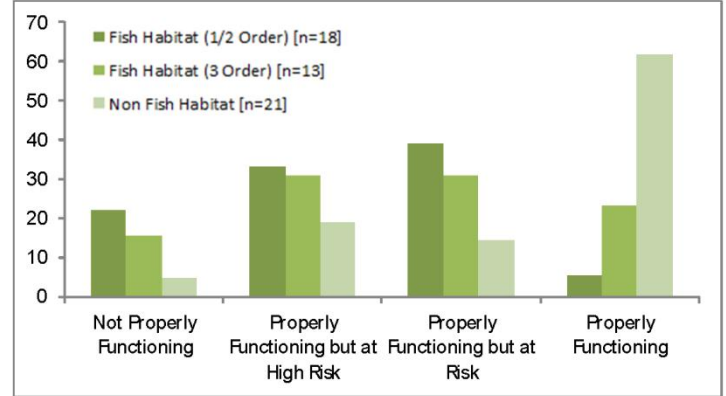


# Riparian Sample Site Condition



## RIPARIAN

### Functioning Category by Fish Habitat (%)



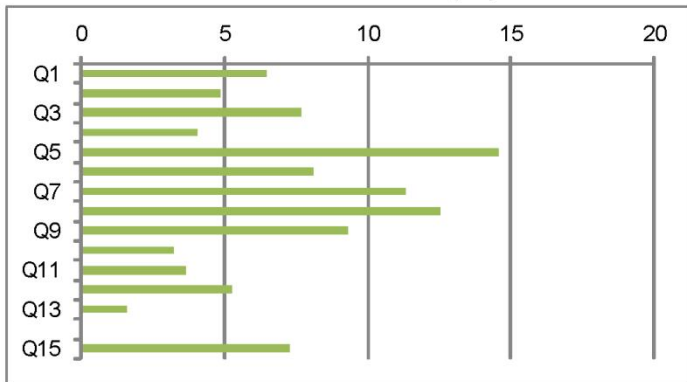
**W-0005**  
Properly Functioning



**W-0728**  
Properly Functioning but High Risk



### Questions Answered with "No" (%)



- Q1: Channel bed undisturbed?
- Q2: Channel banks intact?
- Q3: Channel LWD processes intact?
- Q4: Channel morphologically intact?
- Q5: Allow unimpeded flow of fish, organic debris, and sediments?
- Q6: Good diversity of fish cover attributes?
- Q7: Sufficient moss to indicate a stable and productive system?
- Q8: Introduction of fine sediments minimized?
- Q9: Support a diversity of invertebrates?
- Q10: Vegetation sufficiently protected from windthrow?
- Q11: Bare erodible ground or soil disturbance minimized?
- Q12: Sufficient vegetation to maintain root network and LWD supply?
- Q13: Sufficient vegetation to provide shade and reduce microclimate change?
- Q14: Presence of noxious weeds and/or invasive plants is limited?
- Q15: Vegetation within 10m of stream healthy?

**W-0440**  
Properly Functioning



**W-0528**  
Not Properly Functioning

